

1 1/16" BORE CORROSION-RESISTANT CYLINDER



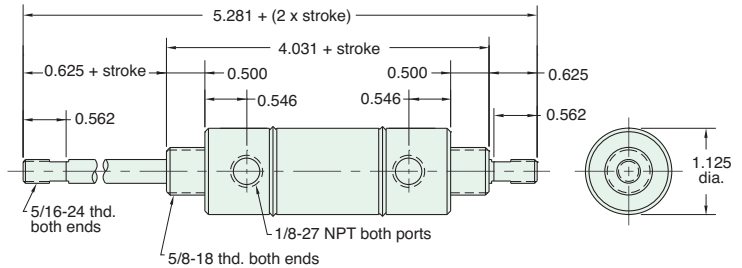
CR-SDD-17-□-□

Double Acting



Mount: Stud
Type: Double Rod

Standard Stroke Lengths: 1", 2", 3", 4", 5", 6"
Options: M, V, N, P6, P7, P8



Furnished without nut(s). Order Part No. N10-18-SS.

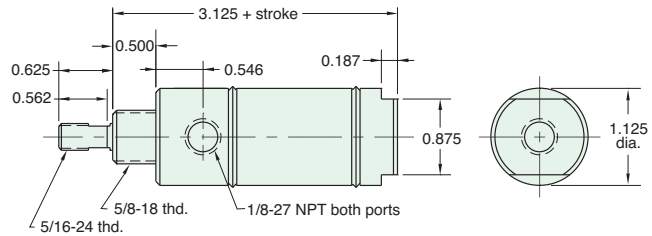
CR-SDR-17-□-□

Double Acting



Mount: Stud
Type: Rotating Rod

Standard Stroke Lengths: 1/2", 1", 1-1/2", 2", 3", 4", 5", 6"
Options: M, V, N



Furnished without nut(s). Order Part No. N10-18-SS.

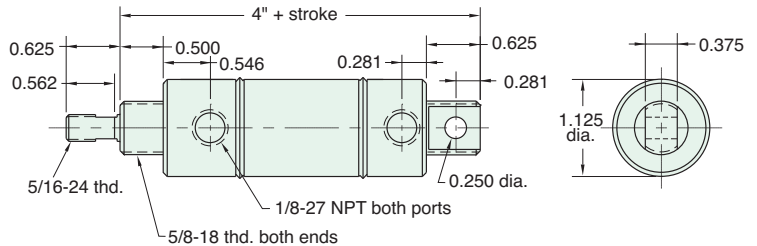
CR-UDR-17-□-□

Double Acting



Mount: Universal
Type: Rotating Rod

Standard Stroke Lengths: 1/2", 1", 1-1/2", 2", 3", 4", 5", 6",
Options: M, V, N, P2, P3, P4, P5, P6, P7, P8

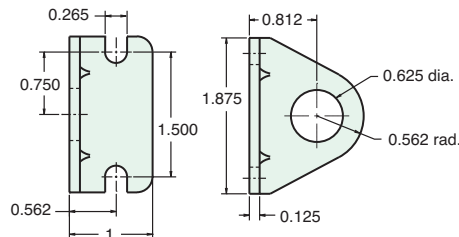


Furnished without nut(s). Order Part No. N10-18-SS.

Stainless Steel Mounting

Foot Bracket
Model Number: FB-1791-SS

Nut
Model Number: N10-18-SS
Max. Torque in lbs.: 12



All Stainless Steel mounting accessories available on page 68.